



REIMAGINING CANARY WHARF

THE TROUBADOUR THEATRE



INTRODUCTION

THE TROUBADOUR, TEMPORARY USE

Canary Wharf Group (CWG) is in the process of developing space for a temporary theatre venue for Wood Wharf.

This proposal forms part of a broader initiative to offer a diverse range of spaces and facilities for those living, working, and visiting the Wharf. We believe that it will complement Canary Wharf's existing arts, events, and cultural programming which are available to the communities across Canary Wharf, Poplar, and the Isle of Dogs.

We plan to partner with the highly regarded Troubadour Theatres to deliver and manage the theatre. Troubadour has a track record of managing some of the best temporary venues across London.

The proposals would see the theatre open in Summer 2025.



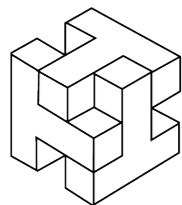
Aerial photo indicating the site of the proposed theatre building

YOUR FEEDBACK

This exhibition material presents an overview of our emerging proposals and ideas ahead of making a planning application to Tower Hamlets Council. Please use the link at the end of this document to share your thoughts.

ABOUT TROUBADOUR THEATRES

THE TROUBADOUR, TEMPORARY USE



Troubadour THEATRES

Troubadour Theatres is a highly regarded organisation that specialises in creating state-of-the-art cultural destinations. They deliver exceptional, world-class experiences across the entertainment and events spectrum.

Troubadour has hosted numerous world-renowned theatre productions, film and TV shoots, as well as various events. They have operated a number of established venues across London, including:

Meridian Water Studios: One of the largest purpose-built film studio complexes within the M25, serving high-profile clients like Netflix, BBC Studioworks, and Gucci.

King's Cross Theatre: Operating from 2014 to 2016, it featured three auditoriums and attracted daily visitors.

White City Theatre: Opened in 2019, it hosted over 160 performances of children's shows during the summer of that year, including the National Theatre's Peter Pan.



National Theatre's
Peter Pan

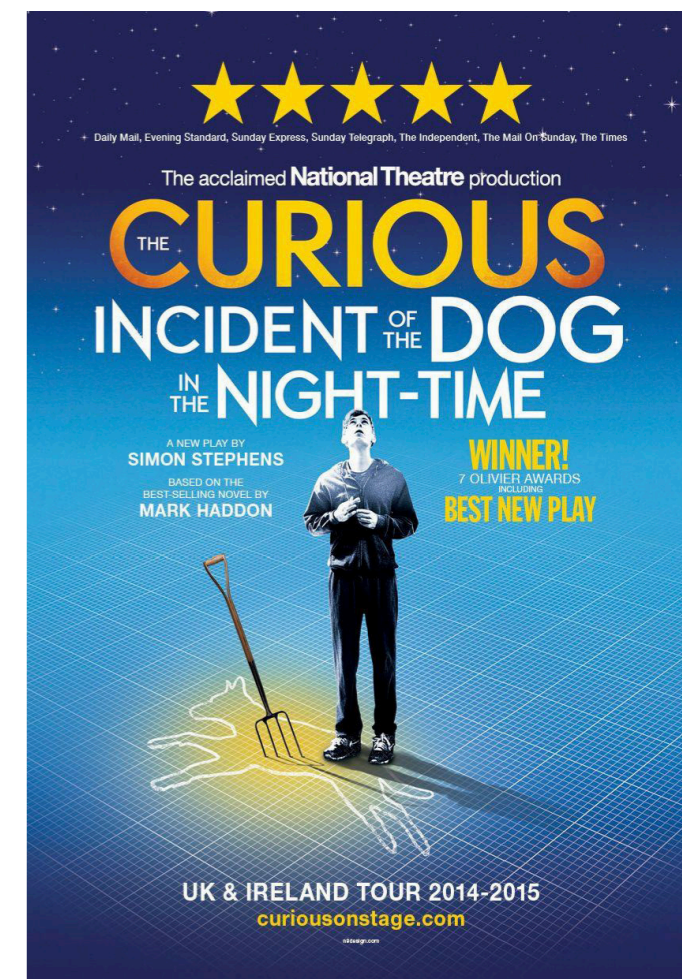


National Theatre's
War Horse

Previous productions held at Troubadour venues

CONTRIBUTING LOCALLY

Troubadour are proposing to collaborate with Canary Wharf Group to create opportunities for local residents. At their other London locations, Troubadour has generated local employment opportunities, offered free tickets to local community and youth groups, partnered with schools and provided space for community meetings.



OUR PROPOSALS

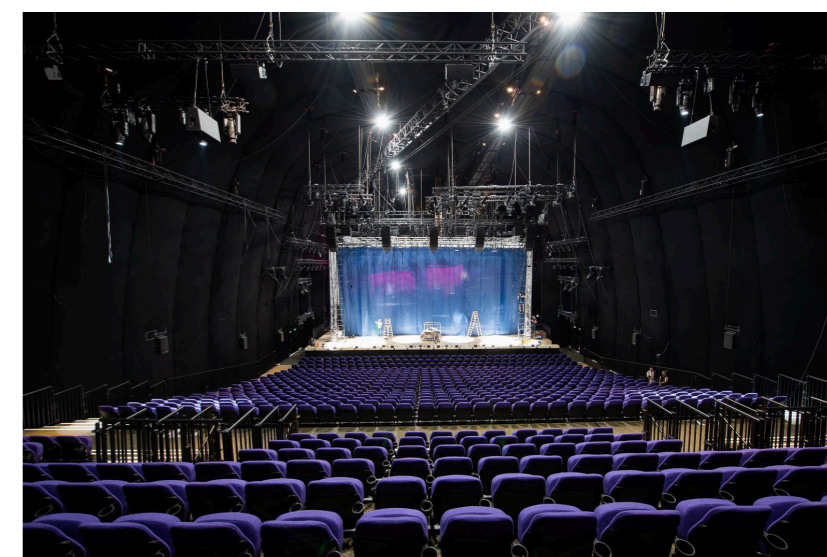
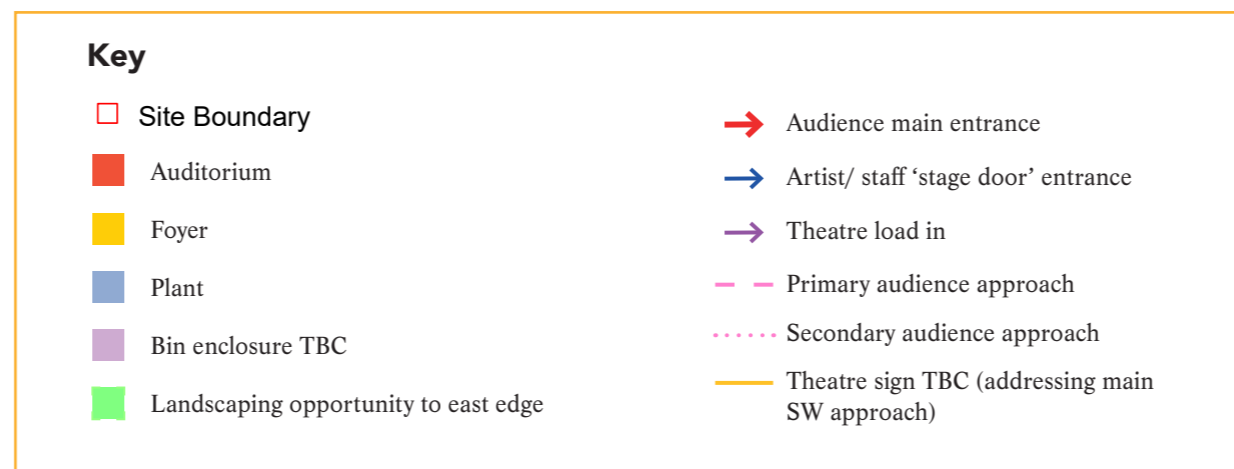
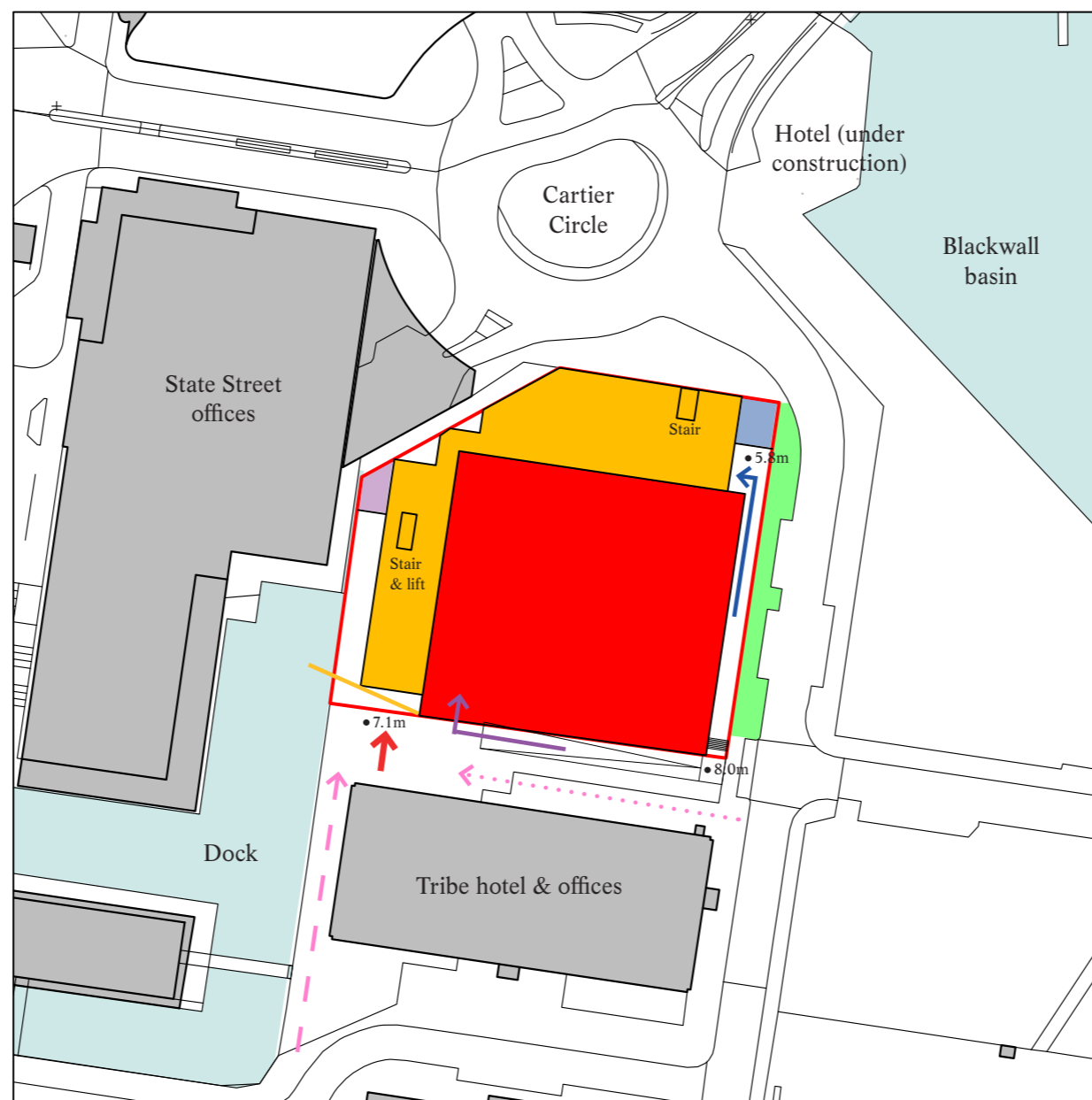
THE TROUBADOUR, TEMPORARY USE

The site for the theatre is located at the north end of Charter Street, near Cartier Circle. We intend to make a planning application to Tower Hamlets in the coming weeks for a temporary building for up to five years.

The proposals comprise the following elements:

- A 1,300 capacity auditorium which can be configured to suit different types of production.
- Back of house facilities including offices and dressing rooms.
- Front of house services including foyer, cloakrooms and restrooms.
- Audience bars on ground, first and second floors.
- A area for c.150 covers.

The front and back of house facilities will be within a three-storey building wrapped around the north and west sides of the main auditorium, which will be equivalent to a four or five storey building.



Images from other Troubadour venues across London

OUR PROPOSALS

THE TROUBADOUR, TEMPORARY USE

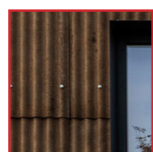
There are two distinct areas within the building design:

1. The main auditorium that houses the stage which will be clad in dark coloured corrugated cladding and double skinned for good acoustic performance.
2. The area for ancillary uses including the foyer, refreshments area and back of house which will utilise a polycarbonate cladding that is partially transparent during the day.

Up to 95% of the structure and cladding and many internal components are able to be reused for future buildings after the structure is dismantled.



Polycarbonate cladding to foyer



Corrugated cladding to auditorium

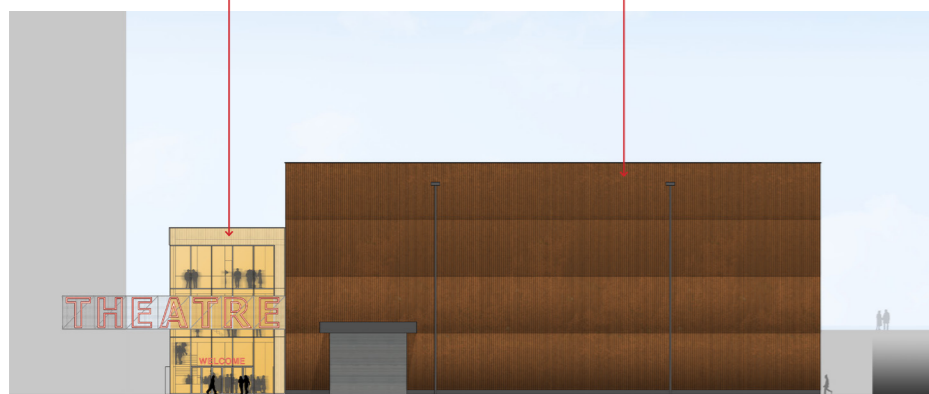
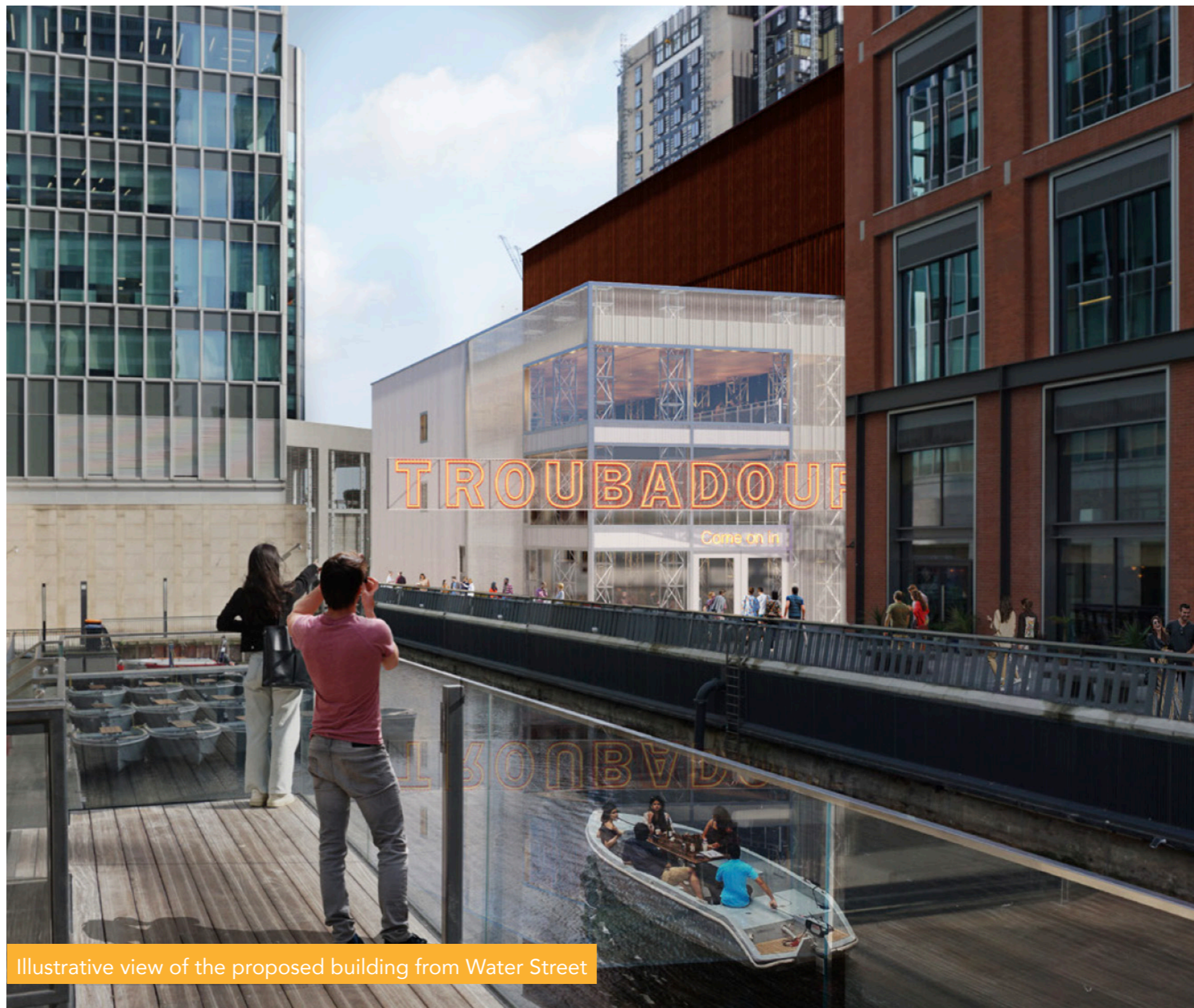


Illustration of the proposed facade



Illustrative view of the proposed building from Water Street

ACCESS, SERVICING & MANAGEMENT

THE TROUBADOUR, TEMPORARY USE

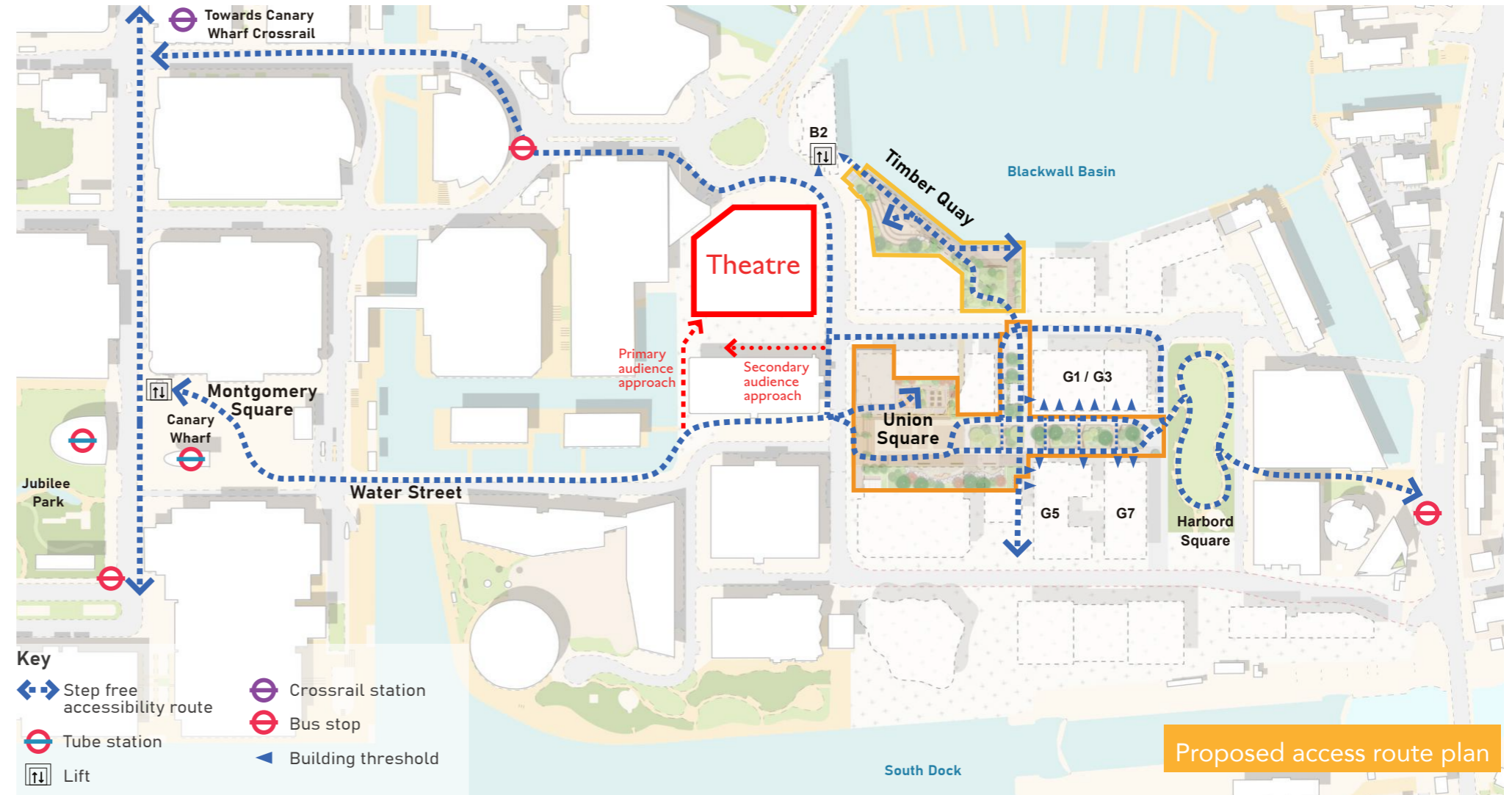
PEDESTRIAN ACCESS

The primary audience approach will be from Water Street where there is a direct link to the Jubilee Line, with secondary access proposed from the north end of Charter Street, connecting to the Elizabeth Line.

MANAGEMENT

The Troubadour is expected to hold shows at matinee and evening performance times when a production is running. A Venue Management Plan, which will be prepared by Troubadour Theatres and informed by management of their other locations, will be submitted to Tower Hamlets as part of the planning application submission.

Patrons will be encouraged not to linger in the public spaces near to the theatre. Additionally, Canary Wharf has a dedicated estate management team that is responsible for the management of the communal public spaces across the Wharf.



INDICATIVE PROGRAMME



YOUR FEEDBACK

THE TROUBADOUR, TEMPORARY USE

LET US KNOW YOUR VIEWS

Our consultation period on these proposals is open until **10th September 2024**.

It is important to us that our proposals benefit the communities that use Canary Wharf as much as possible.

We are particularly keen to hear the views of people who are living or working at or near to Canary Wharf, as well as those who frequently visit the area, and invite you to take part by sharing your thoughts about the proposals for The Troubadour via our online survey.

Click the link below to go straight to our feedback survey.

[GO TO SURVEY](#)



Illustrative view of the proposed building from Water Street (night view)